

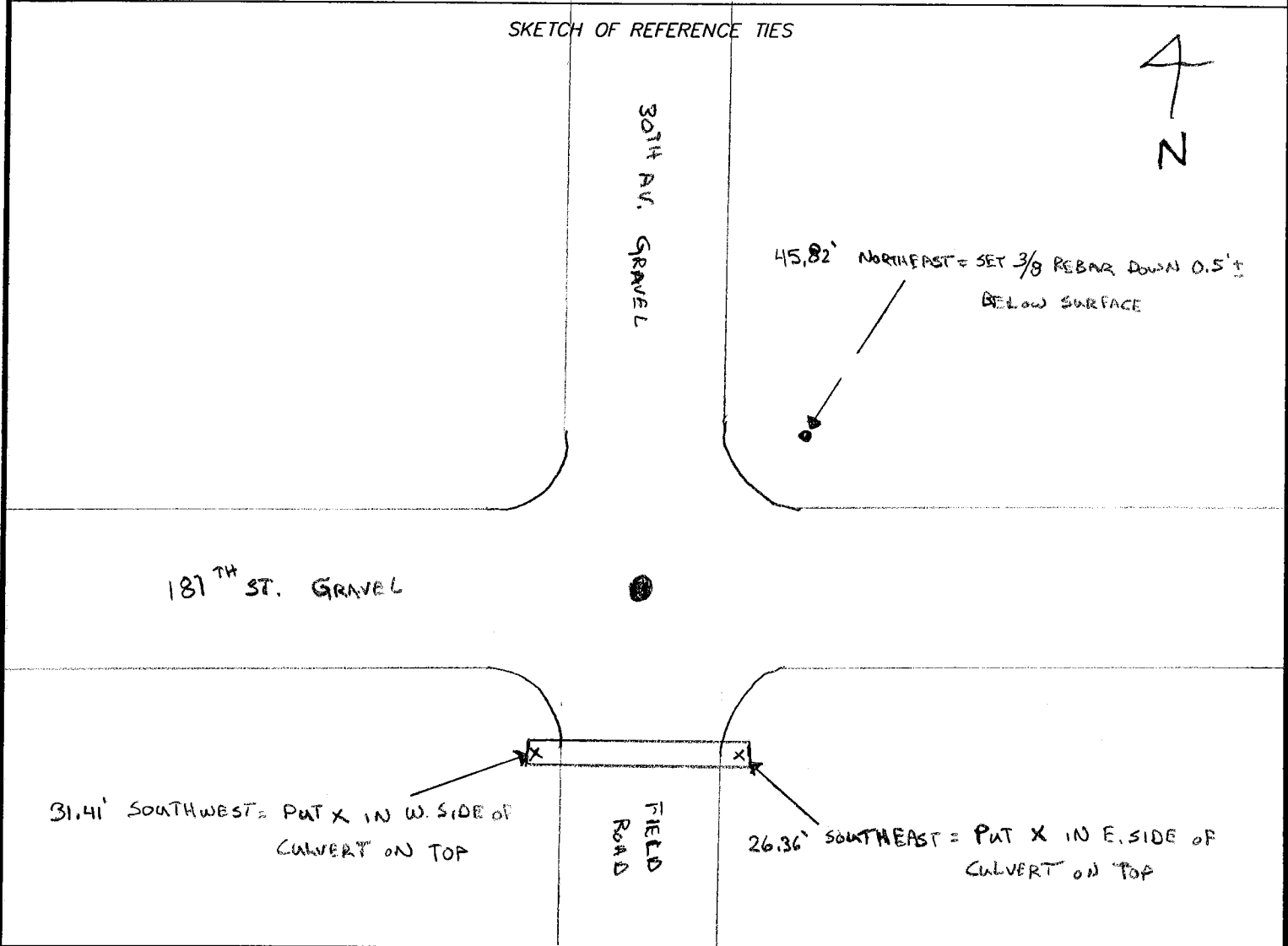
# CERTIFICATE OF LOCATION OF GOVERNMENT CORNER

NORTHEAST Corner of Section 4, Township 107 N, Range 43 W, 5<sup>th</sup> P.M.  
 STATE OF MINNESOTA, County of MURRAY

At the corner location shown on the sketch:


- On 7/5/07 found a 1/2" CAPPED IRON PIPE DOWN 0.2' BELOW SURFACE  
DATE CAP # 11943
- left monument as found,    
  lowered monument,    
  removed monument (explain)
- On \_\_\_\_\_ placed a \_\_\_\_\_  
DATE

### SKETCH OF REFERENCE TIES



Statement of evidence relative to this corner location is on back of page.

I hereby certify that this document and the data contained herein was prepared by me, or under my direct supervision.

  
 SIGNATURE

Registration No. 40853

- Land Surveyor,    
  Professional Engineer  
 County Surveyor,    
  County Engineer

OFFICE OF THE COUNTY RECORDER  
 County of \_\_\_\_\_

I hereby certify that this document was filed in the Co. Recorders office at \_\_\_\_\_ M. on the \_\_\_\_\_ day of \_\_\_\_\_ A.D., 20\_\_\_\_

County Recorder \_\_\_\_\_  
 By \_\_\_\_\_, Deputy  
 DOCUMENT NO. \_\_\_\_\_